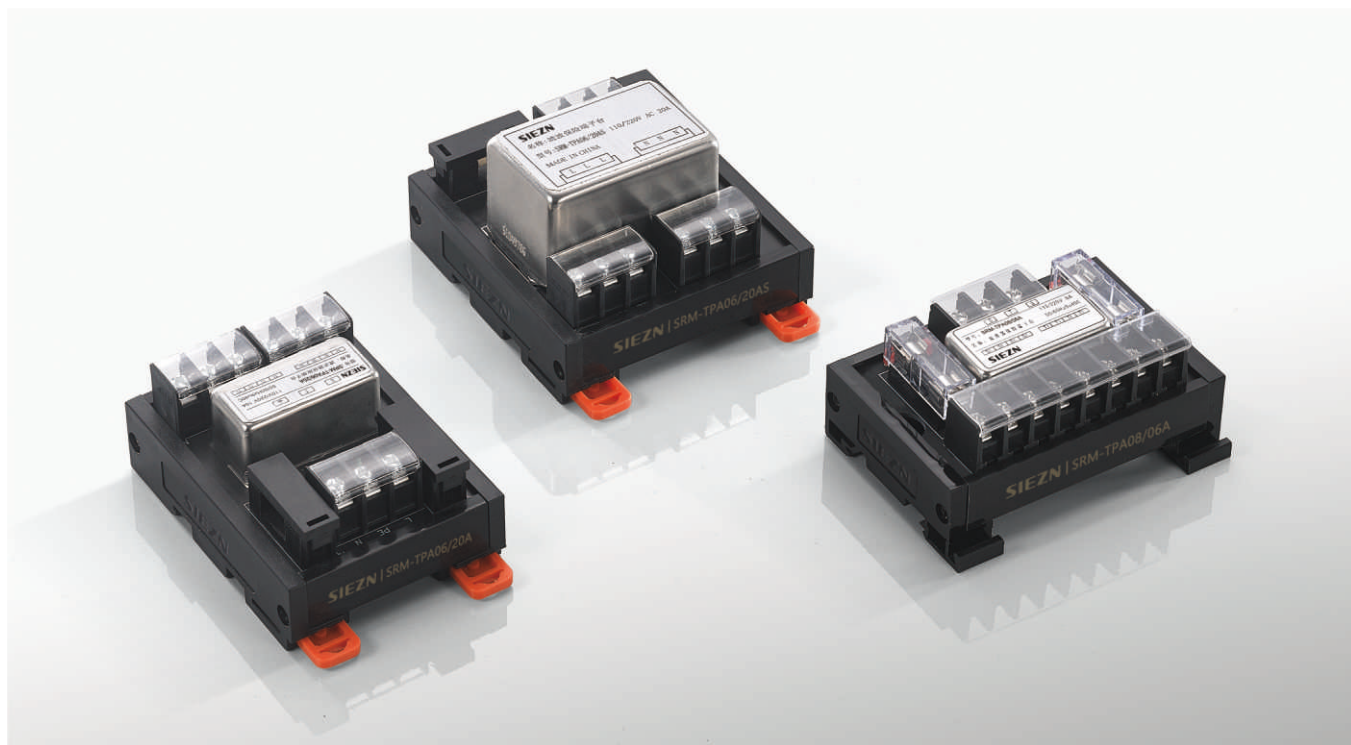


SRM-TPA08/06A SRM-TPA08/10A SRM-TPA06/20A SRM-TPA06/20AS

Power Supply Terminal Block with Filter
滤波保险端子台



产品特点 FEATURES

- 本端子台专为交流控制电路设计;
- 端子台装有两路保险丝, 可兼作短路保护使用;
- 带有电源显示LED, 以及保险丝断路警示LED;
- 安装后可省去分线端子台, 保险管, 电源滤波器, 具有三合一功能。
- This terminal block is specially designed for AC control circuit;
- There are two fuses in the terminal block for short-circuit protection;
- With power display LED and fuse disconnecting warning LED;
- With 3 functions in one module, other modules for redistribution or filters need not be used.

规格参数 SPECIFICATIONS

型号 Model	SRM-TPA08/6A	SRM-TPA08/10A	SRM-TPA06/20A SRM-TPA06/20AS
输入 Input	额定电流 Nominal operating current	6A	10A
	额定电压 Nominal coil voltage	AC220V	
	输入侧对应 Corresponding input Devices	Into the line side AC power supply	
输出侧对应 Corresponding output Devices	Load-side AC power supply		
适合电线 For wire	2.5mm ² Following/ AWG13		4mm ² Following/ AWG13

注意事项 NOTE

- 本端子台与外壳间绝缘, 如果需要将端子台与电箱外壳导通, 请单独连接。
- The terminal station and shell are insulative, and if terminal stations and electric box shell need to be conductive, please connect separately.

适合压着端子 SUITABLE FOR TERMINALS

名称 Name	实物图 Physical diagram	尺寸图 Size diagram
叉型裸端子 Forked Bare Terminal		 MAX6.2mm MIN3.2mm MAX5.8mm MIN4.2mm
圆形裸端子 Needle Bare Terminal		 MAX6.2mm MAX3.2mm MAX4.2mm MIN5.8mm

SRM-TPA08/06A SRM-TPA08/10A SRM-TPA06/20A SRM-TPA06/20AS

Power Supply Terminal Block with Filter
滤波保险端子台



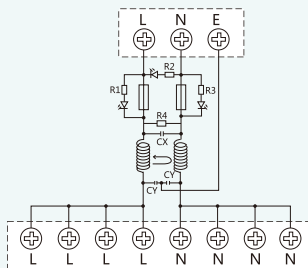
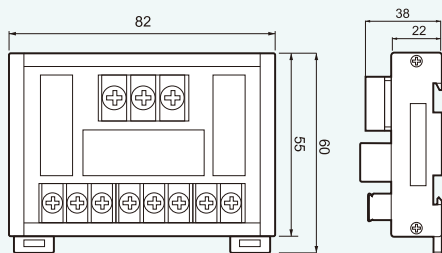
配线图及外形图 WIRING DIAGRAM AND DIMENSIONS

SRM-TPA08/6A SRM-TPA08/10A

(mm)

外形尺寸图 Dimensions

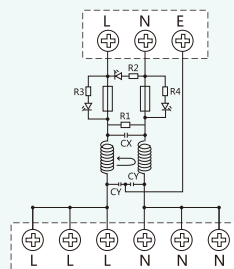
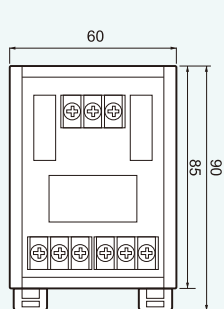
配线图 Wiring Diagram



SRM-TPA06/20A

外形尺寸图 Dimensions

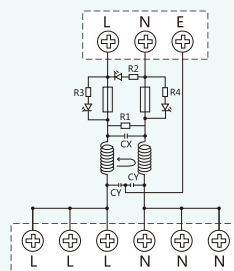
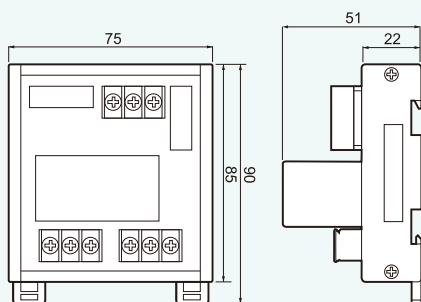
配线图 Wiring Diagram



SRM-TPA06/20AS

外形尺寸图 Dimensions

配线图 Wiring Diagram



注意事项 Note:

- 可安装在标准35mm的DIN导轨上
- DIN Rail Mounting: Standard 35mm DIN RAIL.