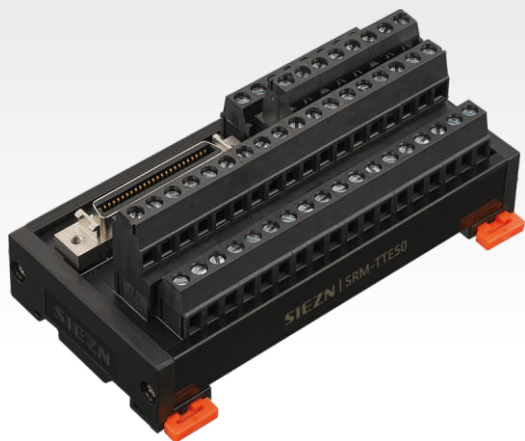


SRM-TTE50

Auxiliary Transition Terminal Block
辅助型转换端子台



产品特点 FEATURES

- 本接线板对应50P的MDR连接器;
- 可直接应用于三菱、安川、松下、台达、三洋、AB等伺服驱动器的信号线接口;
- 无需焊线, 只需看准一对一管脚接线即可;
- 节省时间, 避免错误焊接。
- This terminal board is applicable to 50pin MDR connector;
- It can be used on the signal line port on Mitsubishi, Yaskawa, Panasonic, Delta, Sanyo and AB servo drives;
- No soldering is required. Connect the corresponding pins correctly;
- Saves time and can prevent wrong wiring connections.

注意事项 Note

- 订购前请确认负载类型和大小, 选择使用合适方式进行控制。
- 和PLC连接时, 请务必使用本公司开发的与之对应的专用电缆线。
- Before ordering, please confirm the load type and size, choose the suitable way to control.
- When PLC connection, please be sure to use the company developed and the corresponding special cable.

关联产品 RELATED PRODUCTS

适用电缆 Suitable cable X220-1

规格参数 SPECIFICATIONS

输入 INPUT	
• 额定电流 Nominal operating current	1A
• 额定电压 Nominal coil voltage	DC 24V
输出侧对应	
Corresponding output Devices	Servo motor control signal line circuit

适用PLC SUITABLE PLC

伺服驱动器 Servo Drive

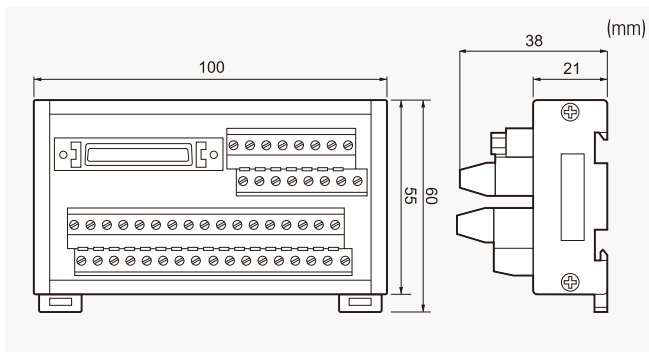
Mitsubishi Delta, Sanyo
Yaskawa AB etc. servo drive interface
Panasonic

适合电线 SUITABLE WIRE

剥线长度: 6mm 1.5mm² Following /AWG16



外形尺寸图 DIMENSIONS



接线图 WIRING DIAGRAM

