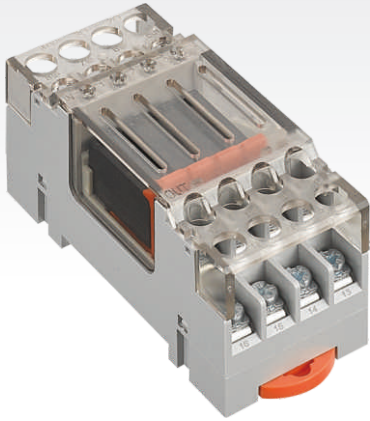


SRM-RA3

Signal Relay Module
信号继电器模块

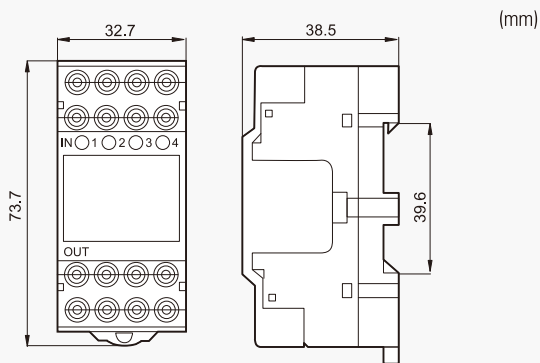


SRM-RA304AND24 特点 FEATURES

- 实现宽33mm的细长形状；
 - 可进行螺钉安装和DIN导轨单触式安装；
 - 带LED指示灯，可轻松确认动作；
 - 4点端子可根据用途选择搭载继电器；
 - 继电器型号：APAN3214，模组型号：SRM-RA304AND24；
 - 继电器品牌：Panasonic松下；
 - 继电器状态指示灯(红色)；
 - 继电器可插拔。
- It has a slender shape of 33mm in width;
 - Screw mounting and DIN rail one touch mounting are available;
 - With LED indicator, you can easily confirm the action;
 - The 4-point terminal can be equipped with relay according to the application;
 - Relay model: APAN3214, module model: SRM-RA304AND24;
 - Relay brand: Panasonic;
 - The relay status indicator is on (red)
 - The relay is pluggable.



外形尺寸图 DIMENSIONS

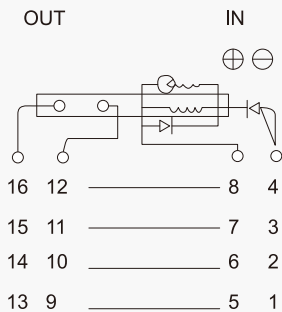


输入线圈参数 INPUT COIL PARAMETERS

• 产品型号 Product Model	SRM-RA304AND24
• 额定电压 Rated voltage	5VDC/12VDC/24VDC
• 额定电流 Rated current	7.5mA, 8.3mA
• 动作电压 Action voltage	75%以上(常温环境)
• 释放电压 Release voltage	5%以下(常温环境)
• 动作时间 Action time	20ms以下
• 释放时间 Release time	10ms以下
• 接触电阻 Contact resistance	30mΩ 以下(DC6V 1A) 100mΩ 以下(DC6V 1A)
• 绝缘阻抗 Insulation resistance	1000mΩ (500VDC)



接线图 WIRING DIAGRAM



输出触点参数 OUTPUT CONTACT PARAMETERS

• 触点材质 Contact material	银合金 Silver Alloy
• 电气性能 Electrical Performance	5A/250VAC、5A/30VDC
• 机械耐久性 Mechanical durability	5000000次
• 使用环境温度 Operating ambient temperature	-40-85°C(无结冰、无凝霜)
• 使用环境湿度 Operating ambient humidity	20~85%